

*Desde afuera*  
(*'from outside'*)

for percussion and piano

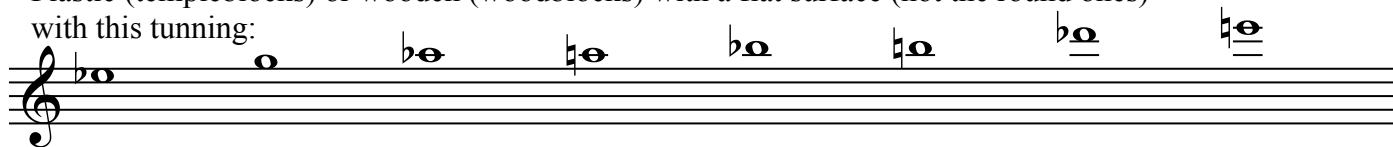
Diego Soifer

-ca. 10 min.-

# Notes

## Woodblocks

Plastic (templeblocks) or wooden (woodblocks) with a flat surface (not the round ones) with this tuning:

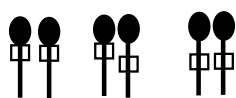


Top (open side): play on the surface of the instrument with mallet's head (traditional technique), on the open side.

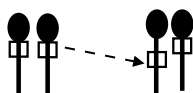
Top (dry side): play on the surface of the instrument with mallet's head (traditional technique), on the closed side (opposite to the open one), which produces a sound with many less harmonics.

Edge (open side): play on the edge of the instrument with mallet's stick, on the open side.

borde (lado seco): play on the edge of the instrument with mallet's stick, on the closed side.



Indicates the different areas of the mallet's stick used to play on the templeblocks' edges.



Progressively move the mallet's stick, which produces timbre changes.

Press roll: make the mallet bounce on the instrument, obtaining 2 or 3 fast strikes.

The percussionist wears 3 thimbles on each hand from the beginning of the piece, in order to be ready for bar 34.

z means tremolo as fast as possible

(around)

dry side -----> open side: each mallets plays the press tremolo, but moving around the templeblock (in opposite direction from each other), meeting in the opposite side (open).

Crotales: two octaves. play with metal nails or long sewing niddles.

## Piano:

The tremoli of the whole piece have a speed of around the sixteenth note. But the main idea is to create the sensation that the notes sound out of synchronization among themselves. In cases of dense chords (ie. bar 124) the hand will naturally divide the chord in 3 or 4 sections for the tremolo. By using the sustain pedal, always maintain the effect of cloud of notes, without hearing specific rhythms.

# Desde afuera

$\text{♩} = 40$  **Hard wooden mallets**



always press rolls (3 strikes)

(Top: with mallet's head. No stick)

B $\flat$  woodblock  
B $\flat$  woodblock

E $\flat$  woodblock  
 { Top (dry side)   
 Top (open side)   
 Edge (dry side)   
 Edge (open side)

*p*

*accel. poco a poco*

6

Top (open side)

wood blocks

*f*

11

Edge (open side)

wood blocks

$\text{♩} = 160$

15

(always press rolls)

the X means play on the edge (open side)

wood blocks

*ff* FROM NOW ON, STAFF LINES INDICATE WOODBLOCKS' PITCHES

5:4 6:4

$\text{♩} = 69$

20

always press roll trem.

wood blocks

E $\flat$  woodblock: always edge, open side

*f*

Desde afuera

28

wood blocks

Now play the Eb woodblock on the top (open side)

*f*

32

33

34

35

36

37

**Improvisation cell 1**

Improvise for about 10 seconds using this phrase as an example. Use regular rhythm, without rests.

Improvise for about 3 seconds using this phrase as an example. Use regular rhythm, without rests.

38 **Maximum speed** **Rit.** **a**

wood blocks

(start only with Eb, Ab and Bb, and add the others progressively)

40  $\text{♩} = 86$

wood blocks

start playing at the top open side, and progressively play closer and closer to the edge of the woodblock

42

wood blocks

play on the edge of each woodblock progressively, play closer and closer to the center of the woodblocks

*p*

44

wood blocks

reach the center and go progressively back to the edges (reach the edges)

*ppp* (LEAVE 1 Mallet)

46 **WITH THIMBLES**

wood blocks

(LEAVE 2nd Mallet)

edge half way to the center of templeblock

(scratch the top of the woodblock with thimble)

49

wood blocks

open side (scratch the top of the woodblock with thimble)

*rit. poco a poco* 3

Desde afuera

grab wooden mallets: while one hand grabs one mallet, the other keeps sustaining the scratch

52  $\bullet = 69$

wood blocks

54

wood blocks

*p* 3 3 *ff*

56

wood blocks

leave mallets with one hand while keep playing tremolo with the other one.

slowly move to the borders of the woodblocks

*ff* *ffp* tremolo with all the thimbles

Pno.

*pp*

tremolando all notes

tremolando all notes

(only high Bb)

(only low Bb)

(continue sustain pedal)

62 (reach the borders)

wood blocks

(only high Fb)

Pno.

sempre tremolando all notes

*p* *p* *mp* *p subito* *mp*

(only low Eb)

Desde afuera

69

Pno.

*p subito*  
*<mp p subito*  
*<mp p subito*

76

Pno.

bass: non tremolando  
 bass: tremolando

82

With thimbles

wood blocks

Top (dry side) --- (around) --- (open side)  
 press roll trem. *mp*  
*trem. accel.*  
 (tenor: continue tremolando normally)  
 bass: non tremolando  
 bass: tremolando  
*simile*  
 (always: bass tremolo when playing Eb, and non tremolo when playing Db and C)

Desde afuera

**88** *a* (open side) -----> corners -----> (open side) (always tremolo with all the thimbles)

wood blocks

Pno.

**94** (always trem. with all the thimbles)

wood blocks

Pno.

**100** (always trem. with all the thimbles)

wood blocks

Pno.

from now on: include bass in tremolandi



Desde afuera

**106** (always trem. with all the thimbles) go to steel drums

wood blocks

Pno.

**113**

perc

Pno.

Steel drums (regular steel drums mallets: hard yarn)

(sustain)

*mp*

*pp*

*p*

**119**

steel drums

Pno.

(right hand: non tremolando)

3

Desde afuera

122

steel drums

Pno.

(right hand: tremolando)

*mf* *mf* *mf* *mf* *p*

(continue sustain pedal)

126

steel drums

Pno.

*p* *mf*

trem. rit. ----- a

6

129

steel drums

Pno.

*f* *mp*

(right hand: non tremolando)

*fp*

accel. -----

(continue sustain pedal)

Desde afuera

131

steel drums

Pno.

132

$\text{♩} = 80$        $\text{♩} = 69$

steel drums

*fff*      *fff* tremolando

Pno.

*fff*      *fff*

(use sustain pedal freely)

136

steel drums

Pno.

(sempre tremolando)

Desde afuera

141

steel drums

Pno.

(sempre tremolando)

147

steel drums

Pno.

(sempre tremolando)

153

steel drums

Pno.

tremolando

(non tremolando)

tremolando

(non tremolando)

tremolando

(non tremolando)

Desde afuera

155

steel drums

Pno.

*p* *ppp*

*p* *ppp*

*p* (non tremolando) tremolando (non tremolando) tremolando

159

perc

Pno.

*mp*

bass: NO tremolando

165

perc

Pno.

no playing, let vibrate

No tremolando, sustain